



ADJUSTED FIT

- Cotton rich polycotton Oxford fabric with **Easy Care** finish
- Soft feminine collar
- Cross stitched mother-of-pearl effect buttons (except Oxford Blue: mother-of-pearl effect white buttons)
- Short sleeves with narrow cuffs
- Darts at bustline & back panel for a feminine shape
- Horizontal last buttonhole
- Curved bottom hem



- 70% combed cotton - 30% polyester
- Oxford
- 135 g/m² EASY CARE
- XS > 6XL
- 1 pc/pack & 10 pcs/carton



DUO CONCEPT
with B&C Oxford SSL /men

SIZES [CM]

B&C OXFORD SSL /W, SW 004	XS	S	M	L	XL	2XL	3XL	4XL	5XL	6XL
A DRESS SIZE	34	36	38	40	42	44	46	48	50	52
B CHEST SIZE	91	96	101	106	111	116	121	126	131	136
C CENTER BACK LENGTH	65	66	67	68	69	70	71	72	73	74



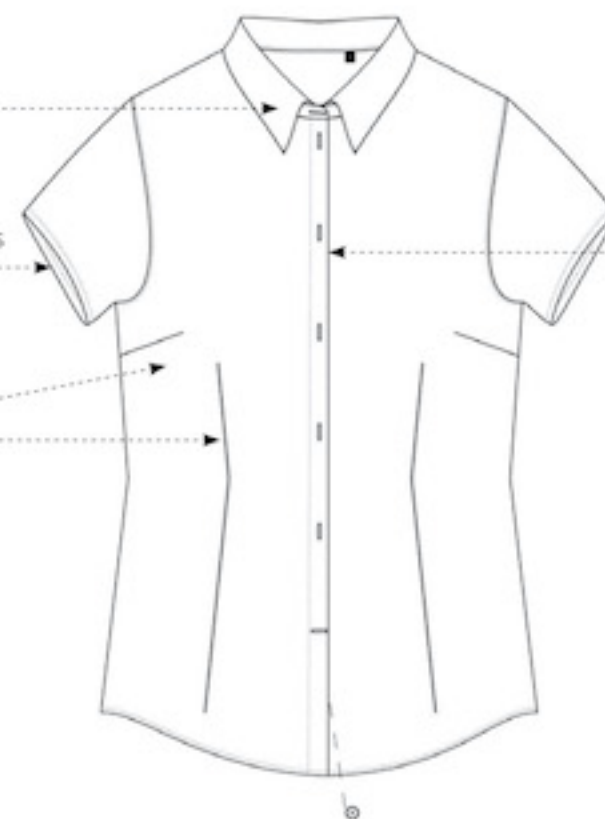
WOMEN'S SHORT SLEEVED EASY CARE OXFORD SHIRT



SOFT FEMININE COLLAR

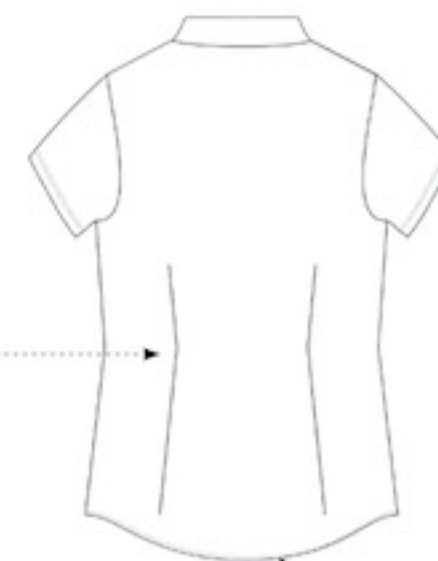
SHORT SLEEVES WITH NARROW CUFFS

DARTS AT BUSTLINE AND FRONT PANEL



CROSS STITCHED MOTHER-OF-PEARL EFFECT BUTTONS

DARTS AT BACK PANEL



CURVED BOTTOM HEM