

# B&C OXFORD SSL /MEN - BK02

B&C  
COLLECTION  
THE SHIRT CULTURE  
BE INSPIRED



## REGULAR FIT

- Cotton rich polycotton Oxford fabric with **Easy Care** finish
- Soft button-down collar
- Cross stitched mother-of-pearl effect buttons (except Oxford Blue: mother-of-pearl effect white buttons)
- Short sleeves with narrow cuffs
- The exclusive B&C Tie-Fix®
- Back yoke with 2 overstitched side pleats
- Left chest pocket
- Inside lap seams for perfect finishing
- Horizontal last buttonhole
- Mitre-shaped bottom hem side reinforcement
- Curved bottom hem



- 70% combed cotton - 30% polyester
- Oxford
- 135 g/m<sup>2</sup> EASY CARE
- S > 6XL
- 1 pc/pack & 10 pcs/carton



**DUO**  
**CONCEPT**  
with B&C Oxford SSL /women

## SIZES [CM]

B&C OXFORD SSL /M. SM 002	US	S	M	L	XL	2XL	3XL	4XL	5XL	6XL
A COLLAR TO FIT	CM 37/38	39/40	41/42	43/44	45/46	47/48	49/50	51	52	
	INS 14.5/15	15.5	16.5	17.5	18	19	19.5	20	21	
B CHEST TO FIT	CM 92/97	97/102	102/107	107/112	112/117	117/122	122/127	127/132	132/137	
	INS 36/38	38/40	40/42	42/44	44/46	46/48	48/50	50/52	52/54	
C CHEST SIZE	CM 111	114	124	134	141	151	156	161	171	
D CENTER BACK LENGTH	CM 80	81	82	85	86	88	89	90	92	

OEKO-TEX®  
STANDARD 100  
100% COTTON



B&C  
COLLECTION  
THE SHIRT CULTURE  
BE INSPIRED

## MEN'S SHORT SLEEVED EASY CARE OXFORD SHIRT

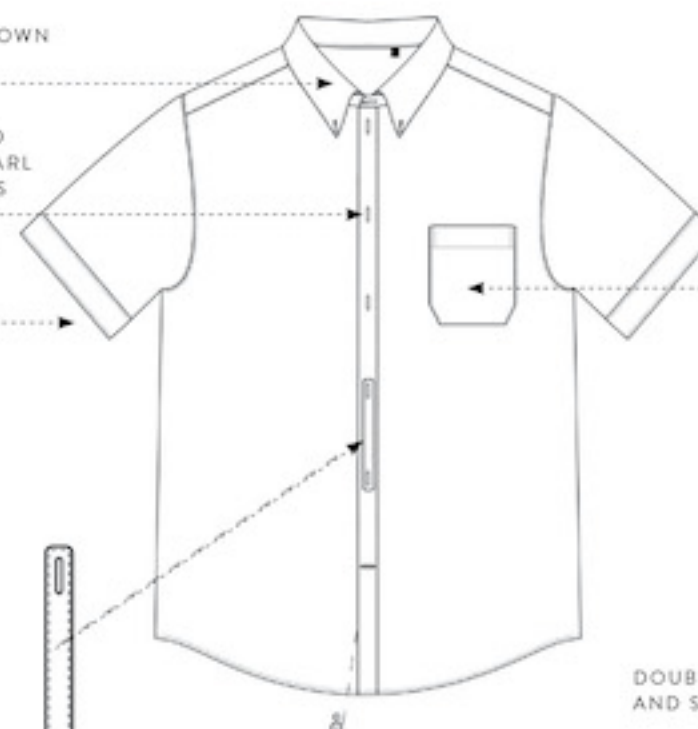


SOFT BUTTON-DOWN COLLAR

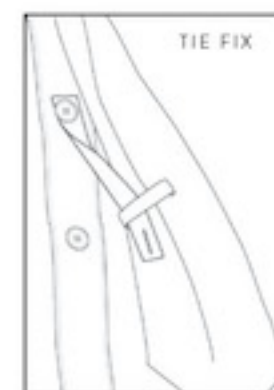
CROSS STITCHED MOTHER-OF-PEARL EFFECT BUTTONS

SHORT SLEEVES WITH NARROW CUFFS

LEFT CHEST POCKET



DOUBLE FOLDED SIDE AND SLEEVE SEAMS



BACK YOKE WITH 2 SIDE PLEATS AND TRENDY TOPSTITCHINGS



CURVED BOTTOM HEM WITH SIDE REINFORCEMENT